

UNIWELL POS AUSTRALIA SELF HELP

TOPIC



Details	Description
Revision No.	20210215
Hardware / Firmware	All HX Models – V4.00 to Current
Equipment	Uniwell POS Terminal
Author	GD

Requirements	Description
Pre Requisites	PLU and Display programming
Duration	Expected time to complete
Related Documents	PLU Programming
Additional Information	None

Outcome

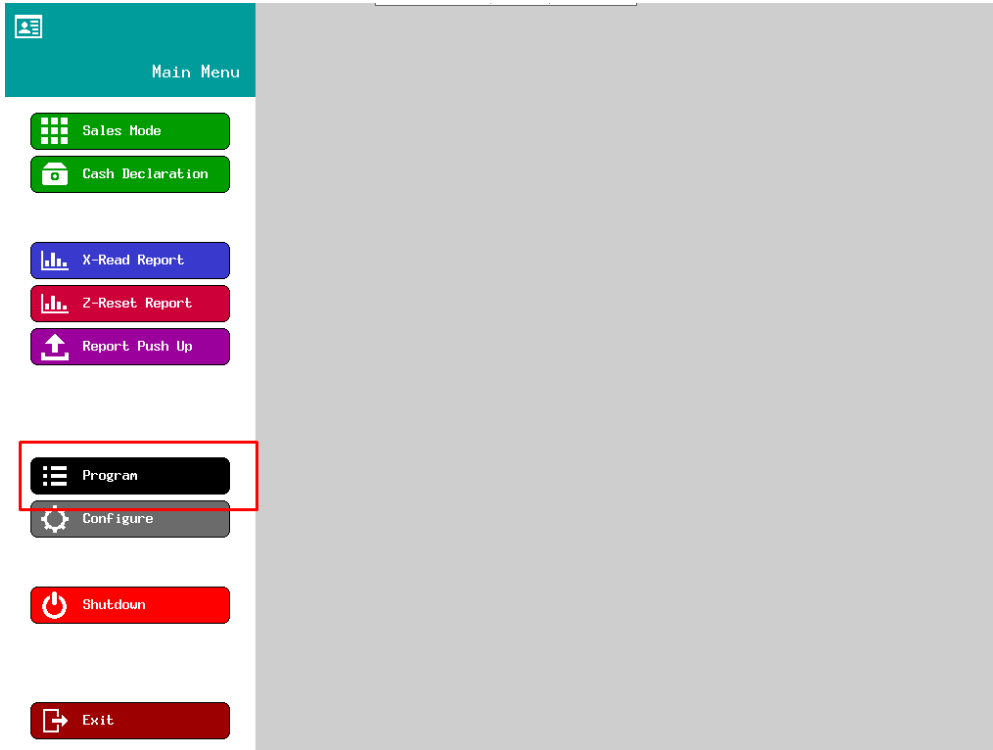
 *Sell a single PLU that is linked to multiple items to be sold as a 'COMBO' deal*

A very popular upsell method is used in the form of Combo meal deals. This is the simplest approach with 2 outcomes where you sell a Burger combo that includes the burger, chips and a drink.

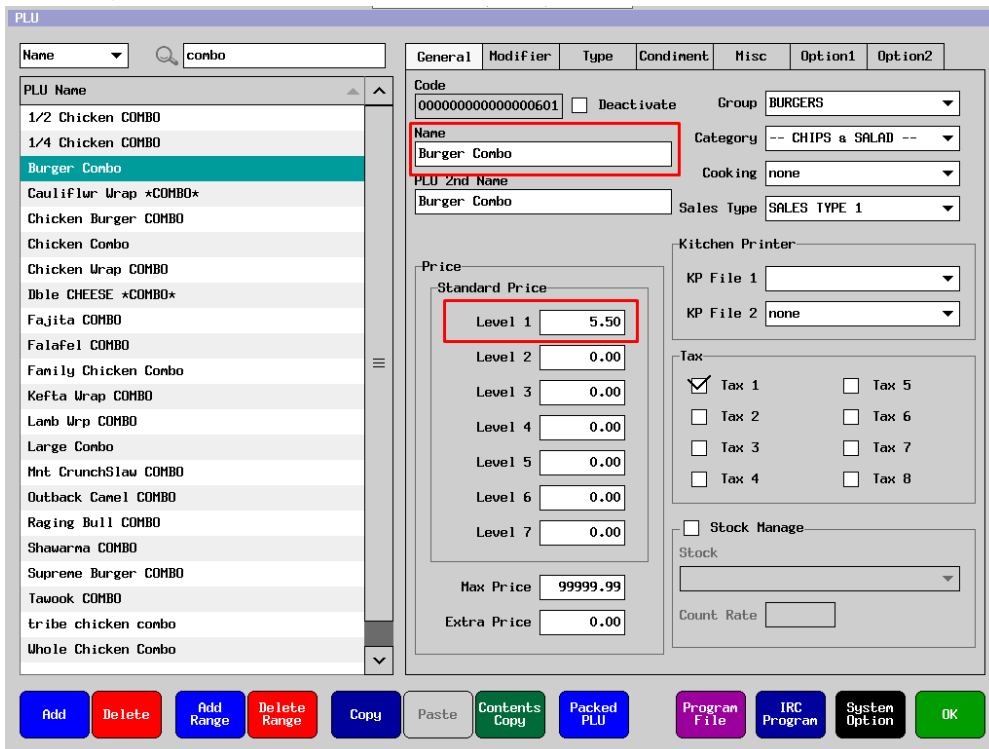
1. Sell a single item that links to many at the combined price of all the items.
2. Sell a single item that links to many at the total price set by the Single item.

*** Start Of Self Help Instructions ***

1. Exit sales screen and enter the Programming module.



2. Go to PLU and create a product named 'BURGER COMBO' using the PLU programming guide. You can assign a price to this combo deal or allow the function to price up all the individual items as if they were individually selected.

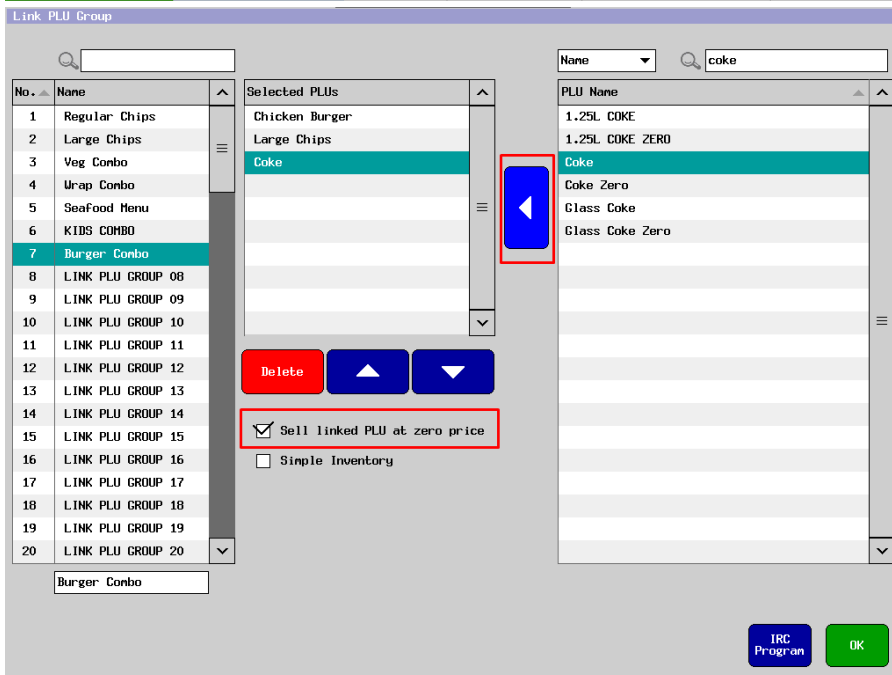
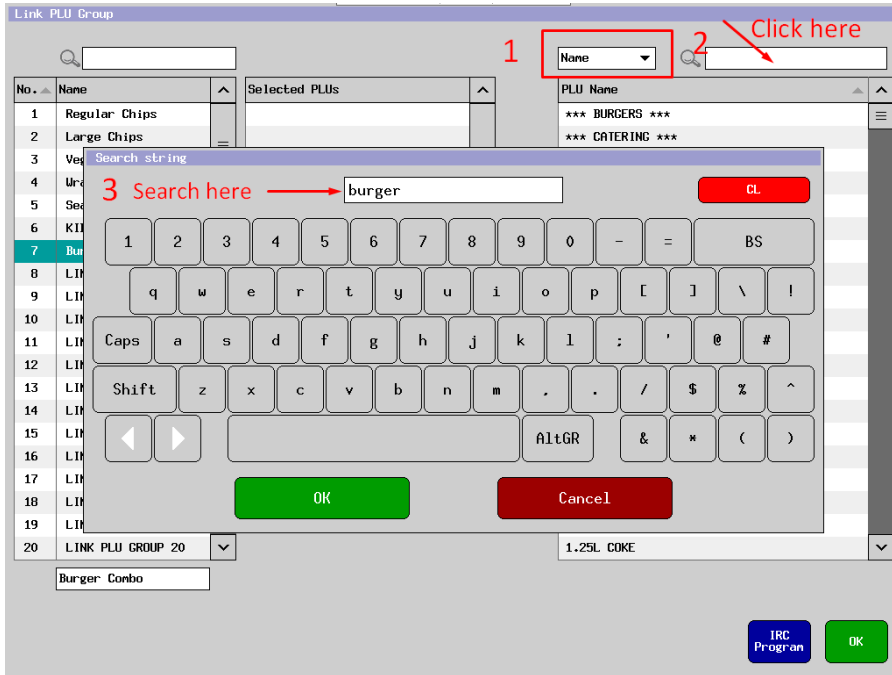


- In the same screen select the 'MISC' tab. Under 'LINK PLU GROUP' highlight and select the next available group, do not worry about the name at the moment, we will address this in the next few steps. For this example we selected group 7, Press OK to save and exit.

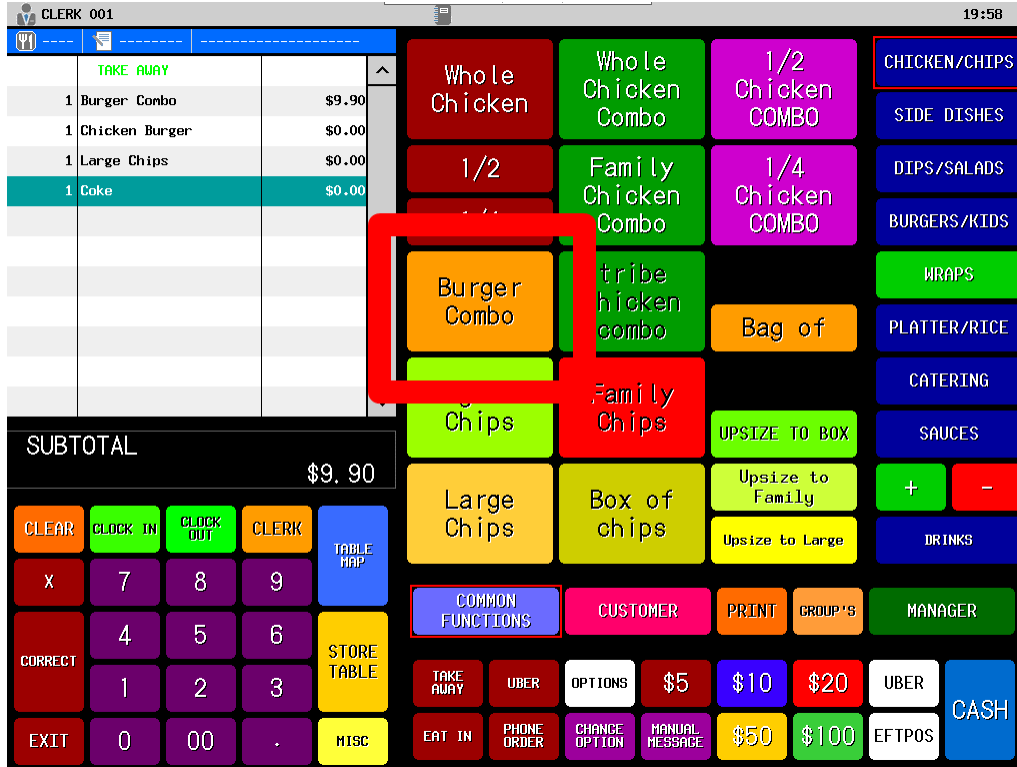
- Select 'PLU LINK GROUP' and then highlight 'LINK PLU GROUP 07'. Rename this to 'BURGER COMBO'.

PLU Name	Code
*** CHARCOAL CHICKEN	000000000000000001
Whole Chicken	000000000000000002
1/2 Chicken	000000000000000003
1/4 Chicken	000000000000000004
MISC	000000000000000005
Salmon	000000000000000006
	000000000000000007
	000000000000000008
	000000000000000009
All Breast	000000000000000010
All Leg	000000000000000011
2 Breast	000000000000000012
2 Leg	000000000000000013
Breast	000000000000000014
Leg	000000000000000015
Cut in 8	000000000000000016
TABOULI	000000000000000017
PICKLES	000000000000000018
SALAD	000000000000000019
FATOUSH	000000000000000020

5. The next step involves selecting the PLU's from the list on the right and attaching them to the main item.
 - a. Search using 'NAME not 'CODE'.
 - b. Type your text in the search window.
 - c. Select the PLU and use BLUE left key to add it the list.
 - d. Repeat the process until all items have been selected.
 - e. If selling the deal at the COMBO price ignoring individual prices, tick the box marked 'SELL LINKED PLU AT ZERO PRICE'.
 - f. Press OK to save and exit.



6. Place the 'BURGER COMBO' plu of the sales screen using the 'DISPLAY' programming document and then return to the sales screen to test.
7. Select 'Burger Combo' and all the items added to the Link PLU Group will populate under the main PLU and sell at the fixed price as programmed.



***** End Of Self Help Instructions *****