

UNIWELL POS AUSTRALIA SELF HELP


SORT PLU



Details	Description
Revision No.	20210216
Hardware / Firmware	All HX Models – V4.00 to Current
Equipment	Uniwell POS Terminal
Author	GD

Requirements	Description
Pre Requisites	PLU and Screen layout design
Duration	Expected time to complete
Related Documents	
Additional Information	Products should be created prior to setting up.

Outcome

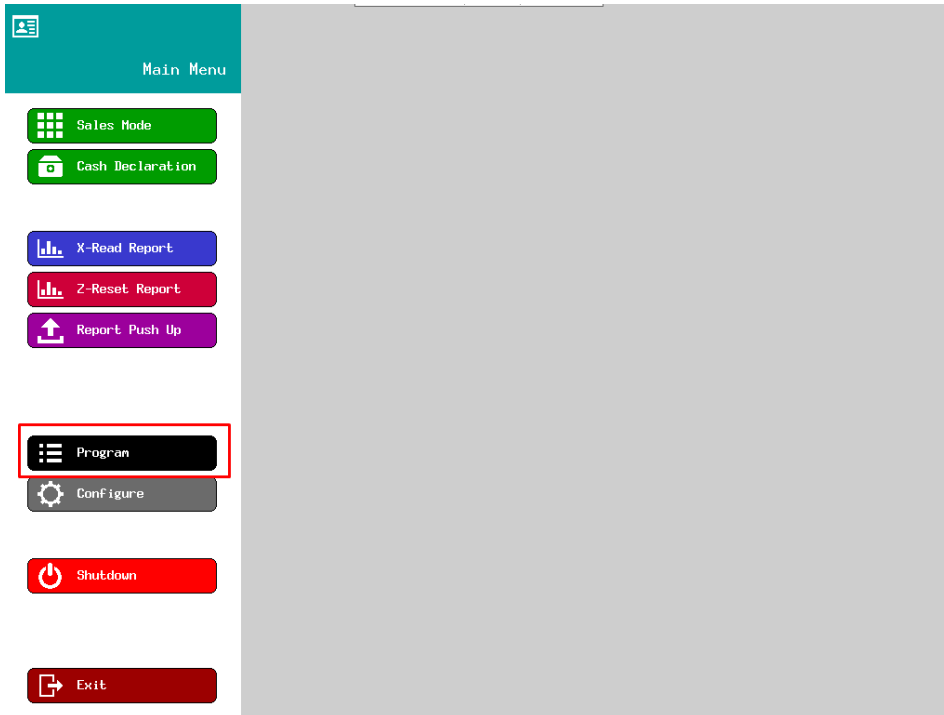
 Assign PLU's to automatically populate screen based on assigned sort PLU group.

Sort PLU is an excellent feature similar to Group PLU where PLU's assigned to each Sort group will automatically populate in alphabetical order.

Unlike the traditional PLU screen layout, Sort PLU is a function and is called from the Function tab. The beauty of this system is that as new PLU's are added to the Sort PLU group, they are automatically applied and then inserted into alphabetical order. If the amount of PLU's exceeds the available screen space, the HX will generate next and previous pages buttons and then continue with allocating remaining PLUs on the next screen.

*** Start Of Self Help Instructions ***

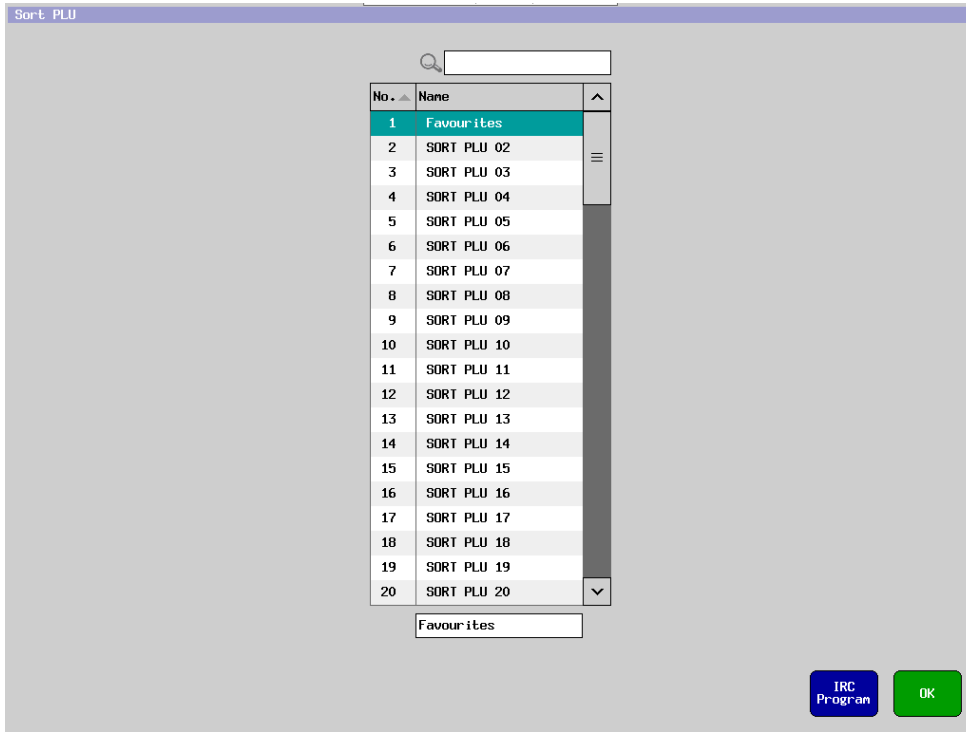
1. Exit the sale screen and enter the 'PROGRAM' screen.



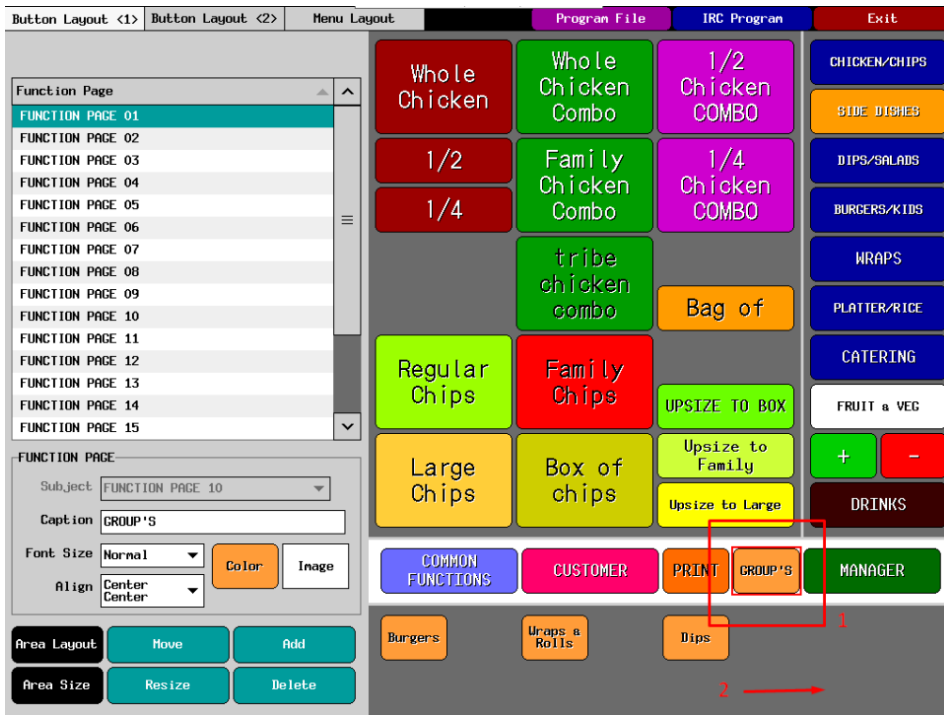
2. Begin by creating unique names for each 'SORT PLU GROUP'. Under the green PLU tab select 'SORT PLU'



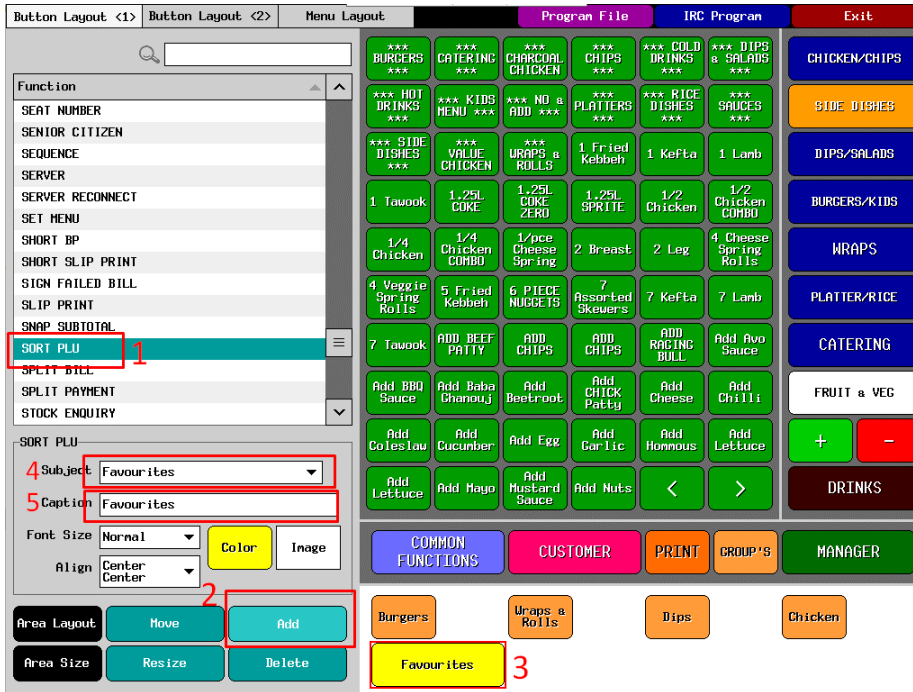
- Click on each field and rename as desired. Once complete select OK to save and exit.



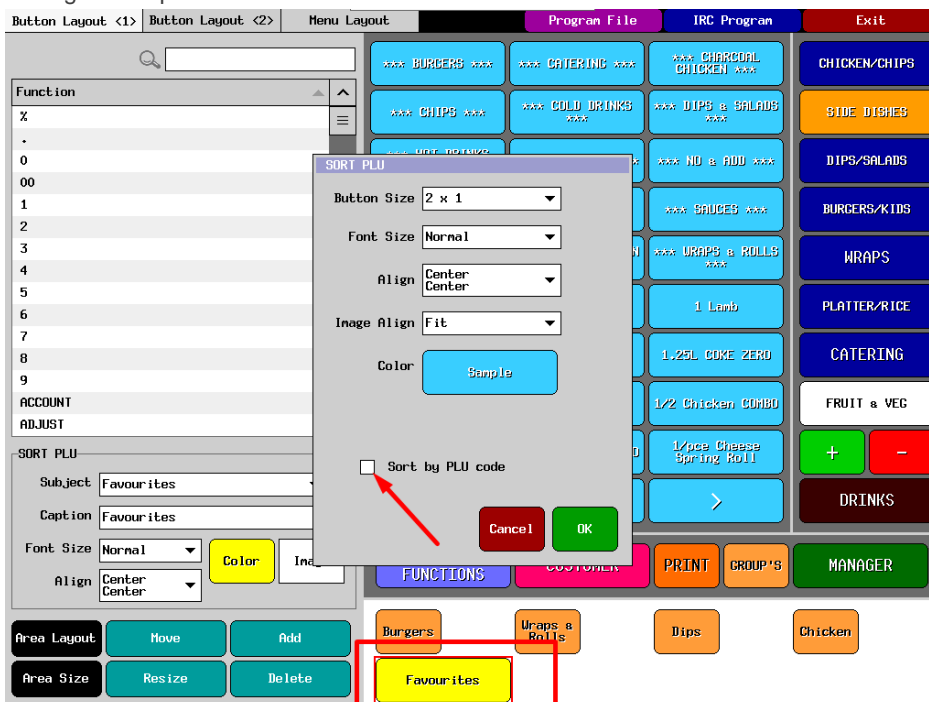
- From the left side of the screen select the 'DISPLAY' button followed by 'SCREEN LAYOUT'
- Create or select the function page that will contain each group, then click in the grey area to reveal the functions from the left side grid.



6. Select 'SORT PLU' from the function
 - a. Press ADD
 - b. Click in the white area
 - c. Select Subject i.e 'Favorites'.
 - d. Enter text in the caption, this will be displayed on the screen



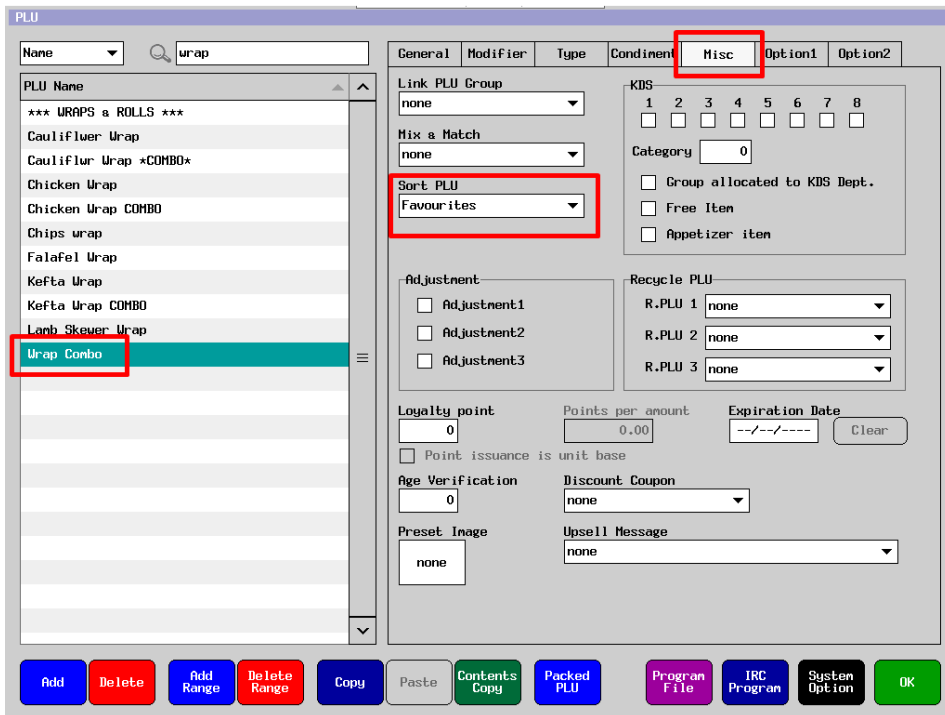
7. To make the buttons larger for each 'SORT PLU GROUP' long press the desired button and wait for the flyout window. Change the values according to your preference's. It is in here that you can change the sorting from Alphabetical to numerical code. Press OK to save and exit.



8. Press EXIT to save and continue, press the green PLU button followed by the blue PLU button.



9. From the list on the left choose the PLU you wish to add to the SORT PU group. Tap on the MISC tab and from the drop-down list select the group.



***** End Of Self Help Instructions *****