




Details	Description
Revision No.	20210216
Hardware / Firmware	All HX Models – V4.00 to Current
Equipment	Uniwell POS Terminal
Author	GD

Requirements	Description
Pre Requisites	PLU Programming
Duration	Expected time to complete
Related Documents	
Additional Information	None

Outcome

 *Prompt to display message after a PLU is entered or transaction finalized*

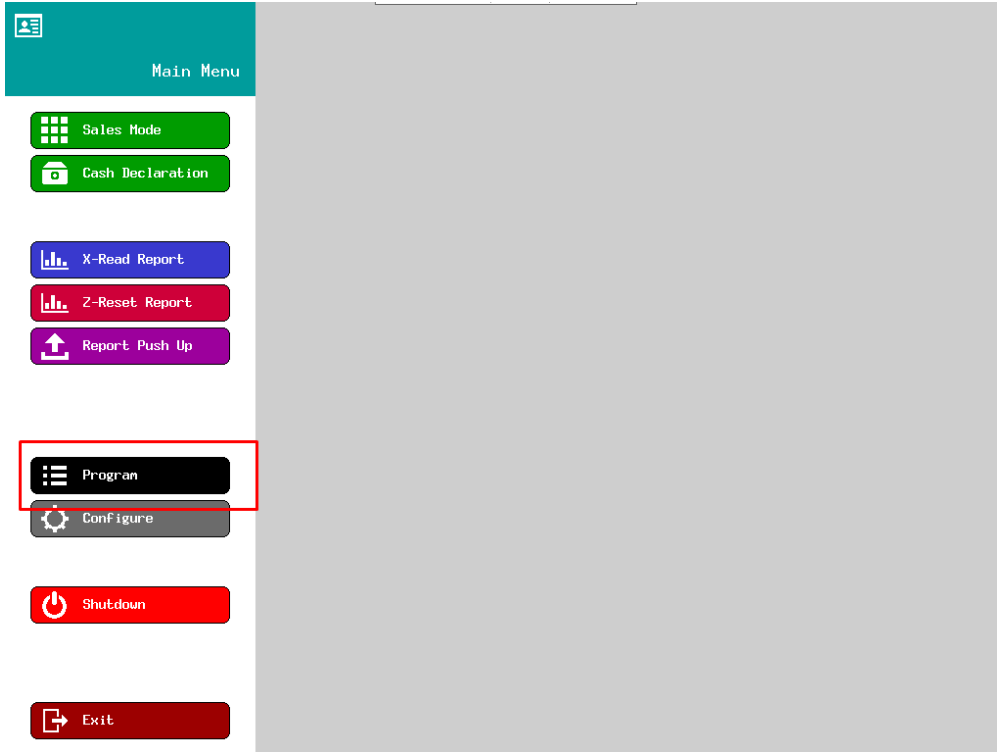
Upsell message is a method that allows interaction between the server and the customer. When a PLU is selected the server is prompted with a visual cue to suggest to the customer. This can function as an upsell or a general message.

Examples:

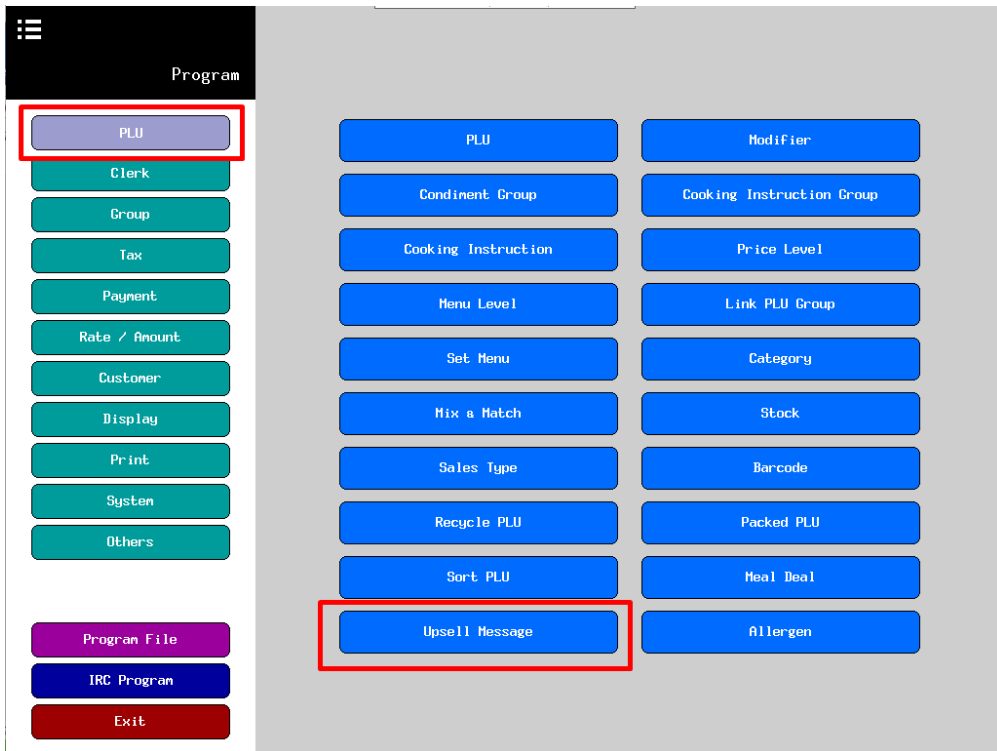
1. When selling a burger an upsell message can display on the screen text to offer the customer a complimenting meal such as steak flavoured curly fries.
2. At the end of a transaction an upsell message can display a reminder to collect steak knives from the servery before taking a seat.

*** Start Of Self Help Instructions ***

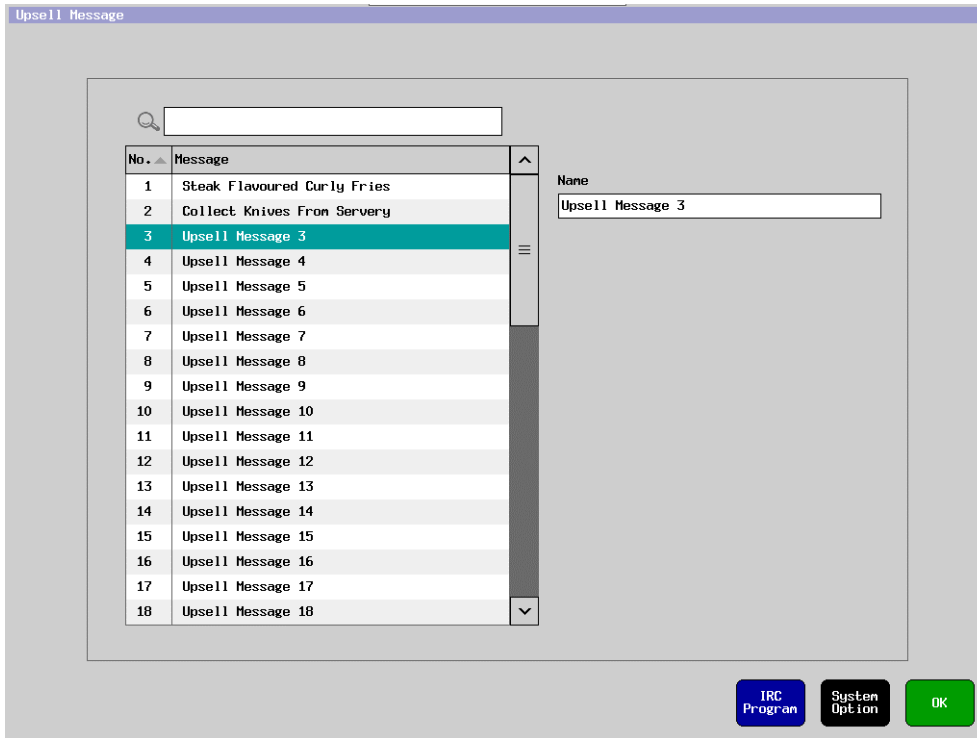
1. Exit sales screen and Select the PROGRAM button.



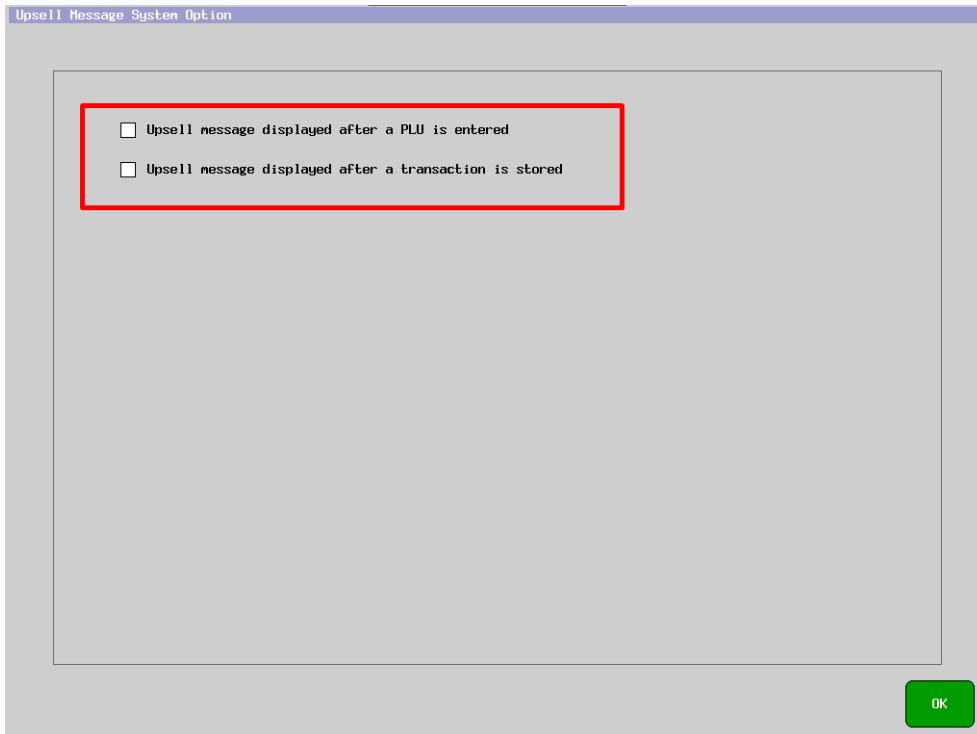
2. From the PLU tab select 'UPSELL MESSAGE'



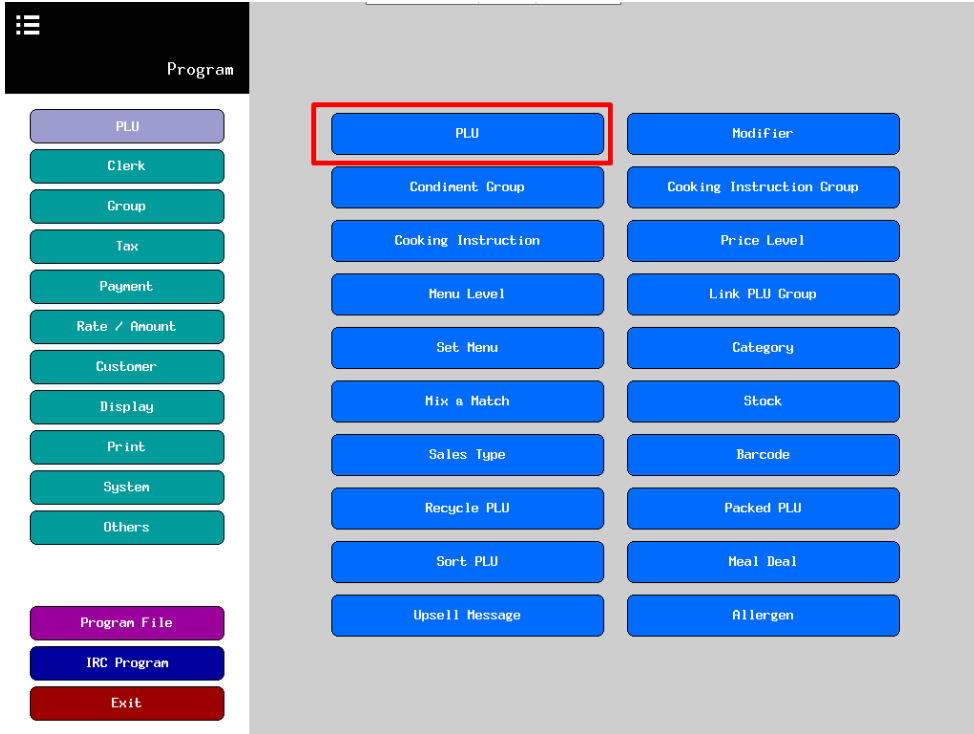
3. Set the upsell message to display the desired text, there is a total of 50 messages.



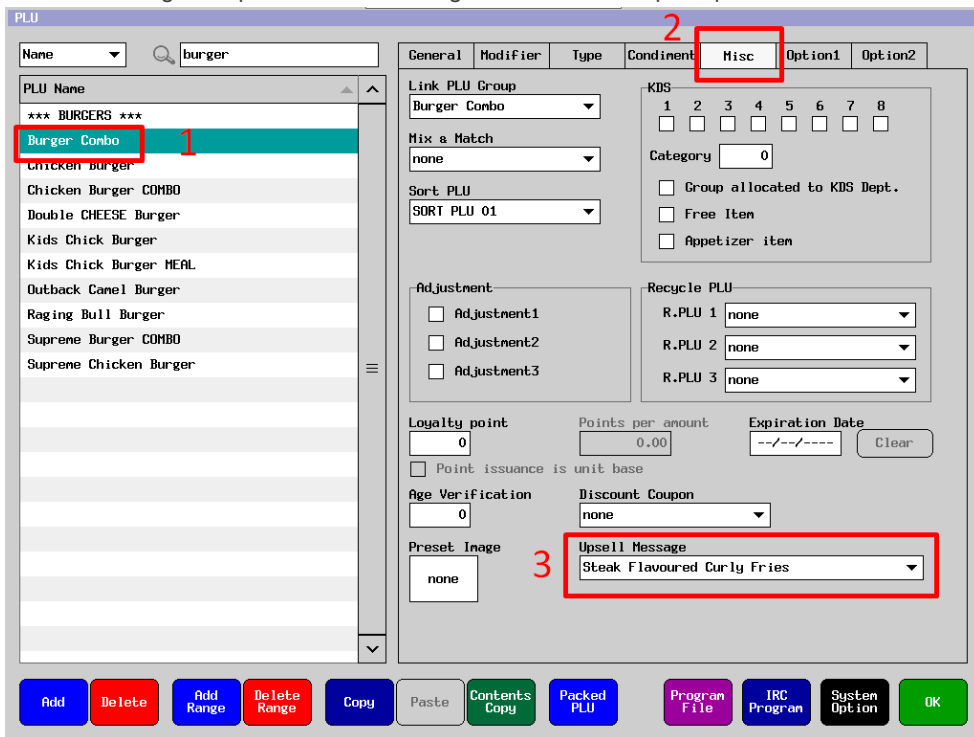
4. After you have modified all messages press 'SYSTEM OPTION' at the bottom of the screen, select the trigger that best suits your venue. Its important to note that this is a global setting and effects all the products.



- Press OK to save and exit, press the blue 'PLU' button.



- Select the PLU requiring an 'UPSELL MESSAGE', from the MISC tab under upsell message select the desired message. Repeat for all remaining PLU's. Once complete press OK to save and exit.



***** End Of Self Help Instructions *****